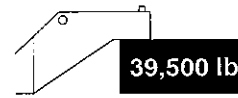
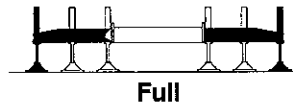


**Rated Lifting Capacities
In Pounds**

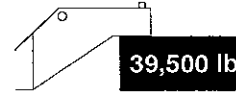
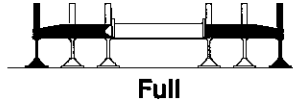


Load Radius (ft)	38.0 ft		50.0 ft		60.0 ft		70.0 ft		80.0 ft		90.0 ft	
	\angle °	360°	\angle °	360°	\angle °	360°	\angle °	360°	\angle °	360°	\angle °	360°
8	71.5	180,000										
9	69.5	167,600										
10	68.0	158,800	74.0	80,500	77.0	58,000	79.5	55,900				
12	64.5	143,600	71.5	75,100	75.0	53,800	77.5	52,300	79.5	41,900		
15	59.5	123,700	67.5	68,100	72.0	48,400	75.0	47,500	77.5	41,900	79.0	33,500
20	49.5	91,300	61.0	59,100	67.0	41,400	71.0	41,100	74.0	41,900	76.0	33,500
25	37.5	71,000	54.0	52,200	61.5	36,100	66.5	36,300	70.0	37,900	73.0	33,500
30	18.5	57,200	46.0	46,900	55.5	32,000	61.5	32,400	66.0	34,000	69.5	31,400
35			37.0	42,800	49.0	28,800	56.5	29,200	62.0	30,400	66.0	28,200
40			24.0	39,600	42.0	26,100	51.5	26,600	58.0	27,600	62.5	25,500
45					33.5	23,900	45.5	24,400	53.5	25,100	58.5	23,300
50					22.0	22,200	39.0	22,600	48.5	23,100	54.5	21,400
55							31.5	20,800	43.0	21,300	50.5	19,800
60							20.5	19,300	37.0	19,800	46.0	18,300
65									29.5	18,500	41.0	17,100
70									19.5	17,400	35.0	16,000
75											28.5	14,900
80											19.0	14,100
Min.Bm.	0.0	31,900	0.0	18,200	0.0	13,000	0.0	10,800	0.0	9,200	0.0	7,900
Ang./Cap.	(31.0)		(43.0)		(53.0)		(63.0)		(73.0)		(83.0)	

Load Radius (ft)	100.0 ft		110.0 ft		120.0 ft		130.0 ft		140.0 ft	
	\angle °	360°	\angle °	360°	\angle °	360°	\angle °	360°	\angle °	360°
20	77.5	32,200	79.0	27,200						
25	75.0	32,200	76.5	27,200	78.0	28,100	79.5	26,900		
30	72.0	32,200	74.0	27,200	76.0	28,100	77.5	26,500	78.5	24,400
35	69.0	29,700	71.5	27,200	73.5	28,100	75.5	26,300	77.0	24,100
40	66.0	27,100	69.0	27,200	71.5	28,100	73.5	26,100	75.0	24,000
45	62.5	24,900	66.0	25,900	69.0	26,200	71.5	25,900	73.5	23,800
50	59.5	23,000	63.0	23,800	66.5	24,100	69.0	25,200	71.5	23,700
55	56.0	21,400	60.0	22,000	63.5	22,300	67.0	23,500	69.5	23,600
60	52.0	19,900	57.0	20,400	61.0	20,800	64.5	21,900	67.5	22,100
65	48.0	18,600	53.5	18,900	58.0	19,300	61.5	20,500	65.0	20,600
70	44.0	17,500	50.0	17,700	55.0	18,100	59.0	19,200	62.5	19,200
75	39.0	16,500	46.5	16,600	51.5	17,000	56.0	17,700	60.0	17,400
80	33.5	15,400	42.0	15,600	48.5	15,900	53.0	15,900	57.5	15,600
85	27.5	14,600	37.5	14,600	44.5	14,800	50.0	14,400	54.5	14,100
90	18.5	13,800	32.5	13,700	40.5	13,400	46.5	13,000	51.5	12,700
95			26.5	12,500	36.5	12,300	43.0	11,900	48.5	11,800
100			18.0	11,500	31.5	11,200	39.5	10,900	45.5	10,600
105					25.5	10,200	35.0	9,900	42.0	9,600
110					17.0	9,400	30.5	9,000	38.5	8,800
115							24.5	8,300	34.5	8,000
120							17.0	7,500	29.5	7,300
125									24.0	6,600
130									16.5	6,000
Min.Bm.	0.0	6,600	0.0	5,500	0.0	4,400	0.0	3,300	0.0	2,400
Ang./Cap.	(93.0)		(103.0)		(113.0)		(123.0)		(133.0)	

() Reference Radius For Minimum Boom Angle Capacities (Shown In Parenthesis) Are In Feet.

**Rated Lifting Capacities
In Pounds**

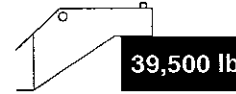
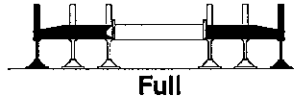


Load Radius (ft)	38.0 ft		50.0 ft		60.0 ft		70.0 ft		80.0 ft	
	∠°	360°	∠°	360°	∠°	360°	∠°	360°	∠°	360°
8	71.5	180,000								
9	69.5	167,600								
10	68.0	158,800	74.0	82,600	77.0	87,000	79.5	73,000		
12	64.5	143,600	71.5	77,100	75.0	81,900	77.5	67,700	79.5	55,700
15	59.5	123,700	67.5	70,000	72.0	75,200	75.0	61,000	77.5	55,700
20	49.5	91,300	61.0	60,900	67.0	66,300	71.0	52,300	73.5	48,300
25	37.5	71,000	54.0	53,900	61.5	59,400	66.5	45,600	70.0	42,400
30	18.5	57,200	46.0	48,500	55.5	53,800	61.5	40,400	66.0	37,800
35			37.0	44,400	49.5	49,300	56.5	36,200	62.0	34,000
40			24.0	41,100	42.0	43,700	51.5	32,800	57.5	30,900
45					33.5	37,900	45.5	29,900	53.0	28,200
50					22.0	32,400	39.0	27,500	48.0	26,000
55							31.5	25,500	43.0	24,100
60							20.5	23,700	37.0	22,400
65									29.5	21,000
70									19.5	19,700
Min.Bm.	0.0	31,900	0.0	18,400	0.0	15,200	0.0	12,600	0.0	10,500
Ang./Cap.	(31.0)		(43.0)		(53.0)		(63.0)		(73.0)	

Load Radius (ft)	90.0 ft		100.0 ft		110.0 ft		120.0 ft		127.3 ft	
	∠°	360°	∠°	360°	∠°	360°	∠°	360°	∠°	360°
15	79.0	45,000								
20	76.0	45,000	78.0	40,300	79.5	42,500				
25	73.0	43,900	75.0	40,300	77.0	42,500	78.5	33,700	79.0	29,700
30	69.5	39,500	72.0	37,100	74.5	38,300	76.0	31,200	77.5	29,400
35	66.0	35,900	69.0	33,300	72.0	34,700	74.0	30,900	75.0	29,100
40	62.5	32,800	66.0	30,100	69.0	31,700	71.5	30,600	73.0	28,800
45	58.5	30,100	62.5	27,500	66.0	28,900	69.5	29,900	71.0	28,600
50	54.5	27,900	59.5	25,200	63.0	26,600	66.5	27,800	68.5	26,800
55	50.5	26,000	55.5	23,200	60.0	24,700	64.0	25,800	66.0	24,800
60	46.0	24,100	52.0	21,500	57.0	22,900	61.0	24,200	63.5	23,000
65	41.0	22,300	48.0	20,000	53.5	21,400	58.0	21,600	61.0	21,300
70	35.0	19,900	43.5	18,700	50.0	19,500	55.0	19,100	58.0	18,900
75	28.0	17,700	39.0	17,500	46.0	17,400	51.5	17,000	55.0	16,800
80	18.5	16,000	33.5	16,000	42.0	15,600	48.0	15,300	52.0	15,000
85			27.0	14,400	37.5	14,000	44.5	13,700	48.5	13,500
90			18.0	13,000	32.0	12,700	40.5	12,500	45.0	12,300
95					26.0	11,500	36.0	11,300	41.5	11,100
100					17.5	10,500	31.0	10,200	37.5	10,000
105							25.0	9,200	33.0	9,000
110							17.0	8,400	27.5	8,200
115									21.0	7,400
120									8.0	6,100
Min.Bm.	0.0	8,600	0.0	7,100	0.0	5,600	0.0	4,200	0.0	3,400
Ang./Cap.	(83.0)		(93.0)		(103.0)		(113.0)		(120.3)	

() Reference Radius For Minimum Boom Angle Capacities (Shown In Parenthesis) Are In Feet.

**Rated Lifting Capacities
In Pounds**

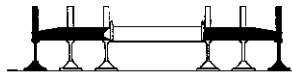


Load Radius (ft)	38.0 ft		50.0 ft		60.0 ft		70.0 ft	
	Δ°	360°	Δ°	360°	Δ°	360°	Δ°	360°
8	71.5	180,000						
9	69.5	167,600						
10	68.0	158,800	74.0	103,300	77.0	96,400	79.0	70,800
12	64.5	143,600	71.5	103,300	75.0	89,600	77.5	70,800
15	59.5	123,700	68.0	103,300	72.0	79,900	75.0	70,800
20	49.5	91,300	61.0	93,400	67.0	67,800	71.0	63,500
25	37.5	71,000	54.0	73,200	61.5	58,800	66.5	55,100
30	18.5	57,200	46.0	59,500	55.5	51,800	61.5	48,100
35			36.5	49,600	49.5	46,300	56.5	42,700
40			24.0	42,100	42.0	41,800	51.5	38,300
45					33.5	37,400	45.5	34,700
50					22.0	31,800	39.0	31,700
55							31.5	27,800
60							20.5	24,200
Min.Bm.	0.0	31,900	0.0	23,100	0.0	18,300	0.0	14,600
Ang./Cap.	(31.0)		(43.0)		(53.0)		(63.0)	

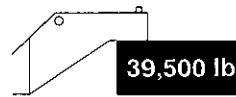
Load Radius (ft)	80.0 ft		90.0 ft		100.0 ft		115.8 ft	
	Δ°	360°	Δ°	360°	Δ°	360°	Δ°	360°
12	79.5	70,800						
15	77.5	67,700	79.0	54,300				
20	74.0	58,400	76.0	52,100	78.0	49,100		
25	70.0	51,300	73.0	45,700	75.0	45,200	78.0	36,300
30	66.0	45,500	69.5	40,600	72.5	42,300	76.0	35,900
35	62.0	40,900	66.0	36,500	69.5	38,300	73.5	35,500
40	57.5	37,100	62.5	33,100	66.0	35,000	71.0	33,400
45	53.0	33,900	58.5	30,100	63.0	32,100	68.5	30,300
50	48.5	31,100	54.5	27,600	59.5	29,400	65.5	27,900
55	43.0	27,900	50.5	25,500	56.0	27,300	62.5	25,600
60	37.0	24,400	45.5	23,600	52.0	24,100	59.5	23,600
65	29.5	21,400	40.5	21,500	48.0	21,100	56.5	20,700
70	19.5	18,900	35.0	19,000	43.5	18,700	53.0	18,200
75			28.0	16,900	39.0	16,600	49.5	16,200
80			18.5	15,100	33.5	14,800	46.0	14,400
85					27.0	13,300	42.0	12,900
90					18.0	12,000	37.5	11,600
95							32.5	10,400
100							26.5	9,300
105							19.0	8,400
Min.Bm.	0.0	11,700	0.0	9,400	0.0	7,200	0.0	4,600
Ang./Cap.	(73.0)		(83.0)		(93.0)		(108.8)	

() Reference Radius For Minimum Boom Angle Capacities (Shown In Parenthesis) Are In Feet.

**Rated Lifting Capacities
In Pounds**



Full

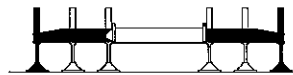


39,500 lb

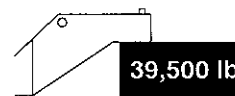


Load Radius (ft)	38.0 ft		50.0 ft		60.0 ft		70.0 ft		80.0 ft		90.0 ft		102.0 ft	
	\angle °	360°	\angle °	360°	\angle °	360°	\angle °	360°	\angle °	360°	\angle °	360°	\angle °	360°
8	71.5	180,000												
9	69.5	167,600												
10	68.0	158,800	74.0	82,600	77.0	87,000	79.0	89,700						
12	64.5	143,600	71.5	77,100	75.0	81,900	77.5	85,000	79.0	63,600				
15	59.5	123,700	67.5	70,000	72.0	75,200	75.0	78,800	77.0	63,600	79.0	57,700		
20	49.5	91,300	61.0	60,900	67.0	66,300	71.0	70,300	73.5	63,600	76.0	56,200	78.0	46,600
25	37.5	71,000	54.0	53,900	61.5	59,400	66.5	63,600	70.0	63,600	72.5	55,300	75.5	45,800
30	18.5	57,200	46.0	48,500	55.5	53,800	61.5	58,100	66.0	61,100	69.5	54,500	73.0	45,200
35			37.0	44,400	49.5	49,300	56.5	51,400	62.0	51,200	66.0	50,900	70.0	42,500
40			24.0	41,100	42.0	43,700	51.5	44,000	57.5	43,800	62.5	43,400	67.0	38,200
45					33.5	37,900	45.5	38,200	53.0	38,100	58.5	37,700	63.5	34,600
50					22.0	32,400	39.0	32,700	48.0	32,500	54.5	32,000	60.5	31,500
55							31.0	28,200	42.5	28,000	50.0	27,600	56.5	27,200
60							20.0	24,600	36.5	24,500	45.5	24,100	53.0	23,700
65									29.0	21,500	40.0	21,200	49.0	20,800
70									19.0	19,100	34.5	18,700	45.0	18,400
75											27.5	16,600	40.0	16,300
80											18.0	14,800	35.0	14,500
85													29.0	13,000
90													21.5	11,600
Min.Bm.	0.0	31,900	0.0	18,400	0.0	15,200	0.0	12,400	0.0	9,900	0.0	7,800	0.0	5,700
Ang./Cap.	(31.0)		(43.0)		(53.0)		(63.0)		(73.0)		(83.0)		(95.0)	

**Fixed Boom Length
Rated Lifting Capacities In Pounds
See Operation Note 10.**



Full



39,500 lb



Load Radius (ft)	38.0 ft		50.7 ft		63.7 ft		76.5 ft	
	\angle °	360°	\angle °	360°	\angle °	360°	\angle °	360°
8	71.5	180,000						
9	69.5	167,600						
10	68.0	158,800	74.5	152,100	78.0	117,900		
12	64.5	143,600	72.0	138,700	76.0	108,800	79.0	85,100
15	59.5	123,700	68.0	122,600	73.5	106,500	76.5	78,400
20	49.5	91,300	61.5	93,500	68.5	93,800	73.0	76,500
25	37.5	71,000	54.5	73,300	63.5	73,800	69.0	73,300
30	18.5	57,200	47.0	59,600	58.0	60,100	64.5	59,700
35			38.0	49,700	52.0	50,300	60.0	49,900
40			26.0	42,200	46.0	42,800	55.5	42,400
45					38.5	37,000	50.5	36,600
50					30.0	31,400	45.0	31,000
55					16.5	26,900	39.0	26,600
60							32.0	23,000
65							23.0	20,100
Min.Bm.	0.0	31,900	0.0	22,700	0.0	16,400	0.0	11,600
Ang./Cap.	(31.0)		(43.7)		(56.7)		(69.5)	

() Reference Radius For Minimum Boom Angle Capacities (Shown In Parenthesis) Are In Feet.